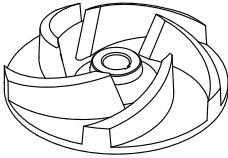


HYDROPOMPE	OPEN IMPELLER 	50 Hz
HYDRO SERIES		2 POLE
3XM		

USE

Submersible electric pumps particularly suitable for the emptying of basements, garages, cellars and flooded premises.

MATERIALS

- Cover**
Anticorodal aluminium alloy
- Pump housing**
Anticorodal aluminium alloy
- Strainer**
Anticorodal aluminium alloy
- Impeller**
Noryl
- Seal motor side**
Seal ring
- Mechanical seal impeller side**
Steatite/Graphite
- Motor housing**
Stainless steel AISI 304
- Motor shaft**
Stainless steel AISI 416
- Bolts and nuts**
Stainless steel Grade A2
- Cable**
10 meters type H07RN-F
Single-phase with 3G1mm² cable and SCHUKO (CEE 7/VII) plug

LIMITS TO USE

- Max temperature of the liquid pumped**
+40°C
- pH of the liquid pumped**
5÷8
- Max immersion depth**
5 m
- Liquid density**
1,0 kg/dm³
- Min immersion depth for continuous service**
200 mm
- Free passage**
8 mm
- Max number starts/hour**
20
- Acoustic pressure level issued**
<70dB(A)

MOTOR

The electric motor is asynchronous with squirrel cage rotor in oil bath
 Class of insulation F
 Protection degree IP68
 2pole; 50Hz

Main voltage values and relative tolerance in relation to the rated voltage value:
SINGLE-PHASE
 230V ±6%
 built-in overheating protection and float switch

Other voltages on request.

OTHER FEATURES ON REQUEST

- Frequency 60 Hz (*see specific catalogue*)
- Other voltages
- With food grade white oil

TECHNICAL DATA

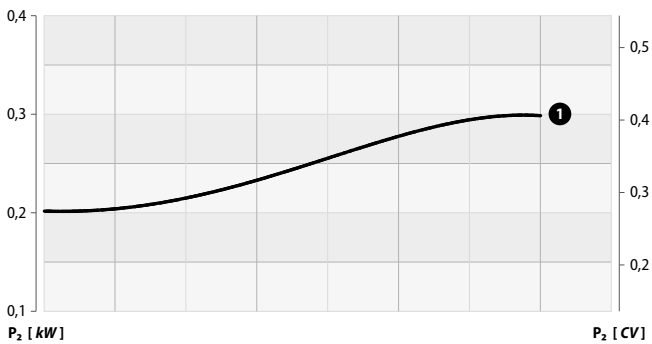
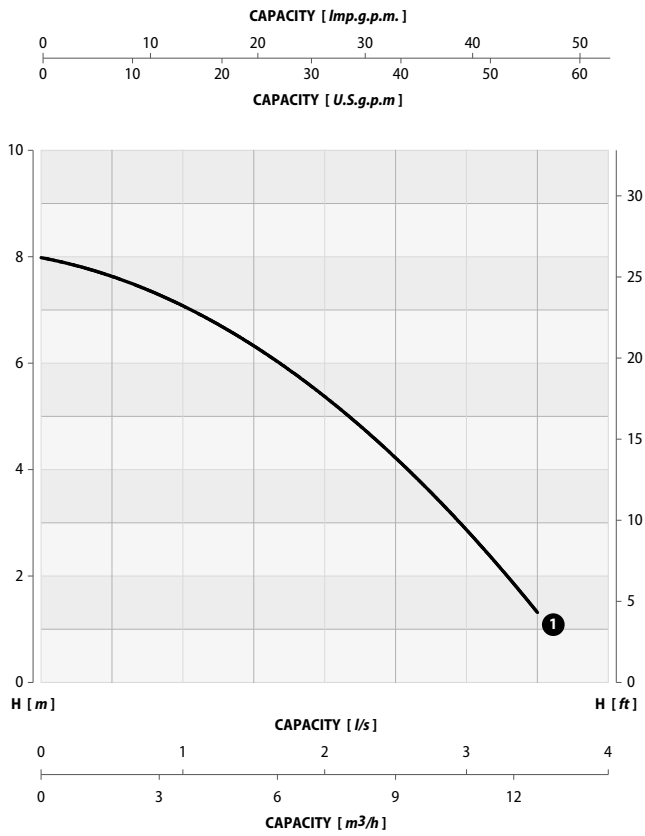
MODEL	P1		P2		VOLTAGE V	CURRENT A	CAPACITOR		CABLE m	WEIGHT kg
	kW		kW	CV			µF	V		
3XM	0,55		0,30	0,40	230 (1~)	2,8	8	450	10	8

HYDRO SERIES	3XM		OPEN IMPELLER	50 Hz
				2 POLE


PERFORMANCE RANGE

		CAPACITY							
<i>l/s</i>	0	0,5	1	1,5	2	2,5	3,0	3,5	
<i>m³/h</i>	0	1,8	3,6	5,4	7,2	9,0	10,8	12,6	
<i>l/min</i>	0	30	60	90	120	150	180	210	

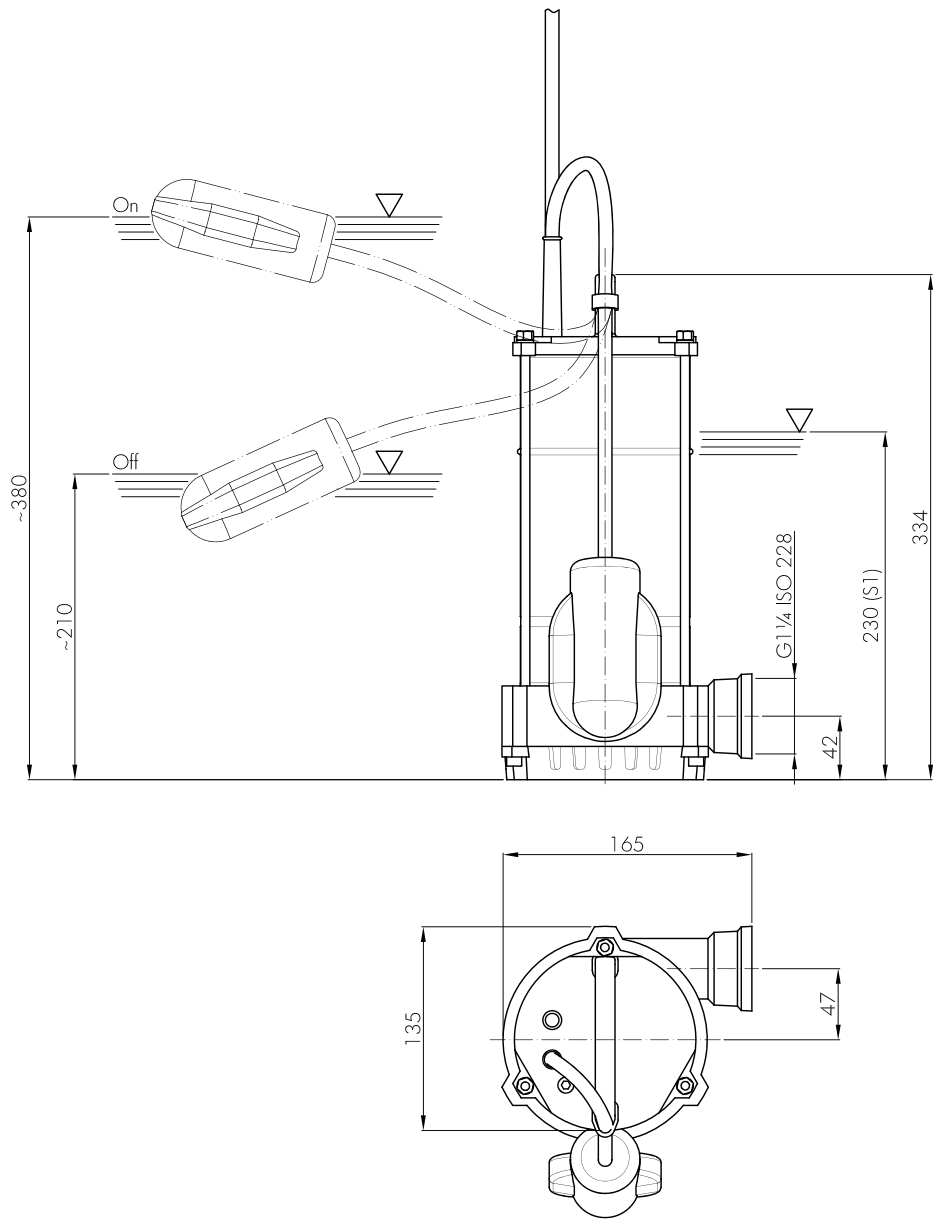
MODEL	CURVE <i>N°</i>	HEAD <i>m</i>							
		3XM	1	8,0	7,6	7,1	6,3	5,4	4,2



Performance tolerance in according to UNI/ISO 9906 Grade 3B

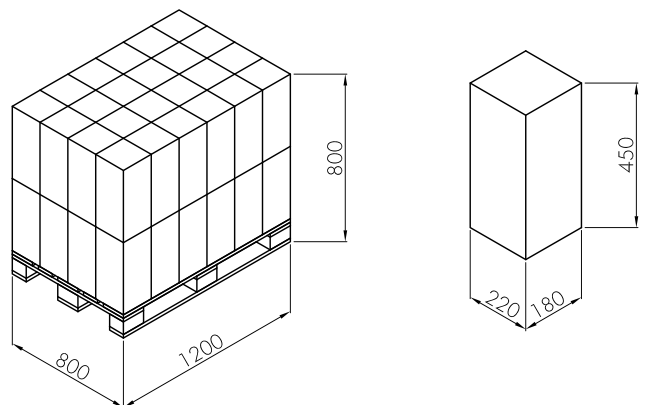
HYDRO SERIES	3XM		OPEN IMPELLER	50 Hz
				2 POLE


INSTALLATION DIMENSIONS



PACKAGING DIMENSIONS

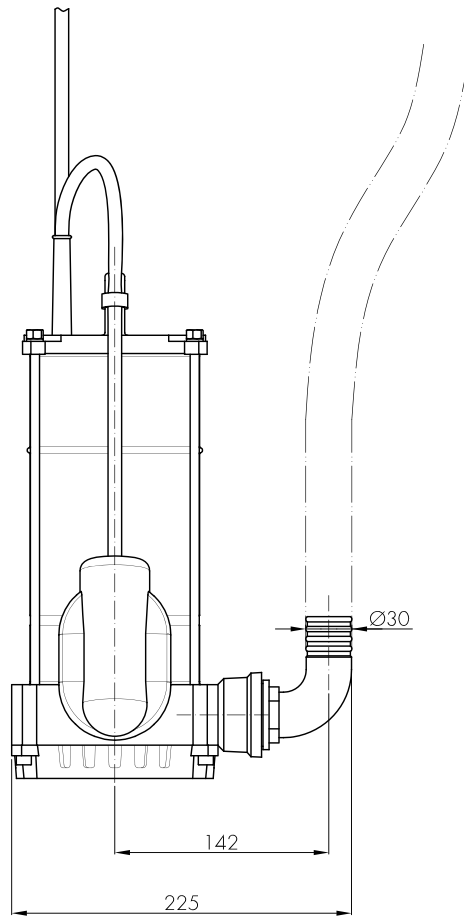
MODEL	PUMPS N°	WEIGHT kg
3XM	32	310




HYDRO SERIES	3XM		OPEN IMPELLER	50 Hz
				2 POLE

PORTABLE INSTALLATION

Transportable as emergency pump with connection to the hose and for free installation in the well.



NOTES



.....

.....

.....

.....

.....

.....

.....

i Changes reserved

02/2019